

# Thriving Through Challenge



PHILADELPHIA  
OUTWARD BOUND SCHOOL

2024  
ANNUAL REPORT

# A MESSAGE FROM OUR EXECUTIVE DIRECTOR

Dear Friends,

If we were giving out awards for the grittiest crew of 2024, it might just go to the Student Leadership Council from the Russell Byers Charter School. Accompanied by Bryony Grant, Byers' Student Affairs Program Manager, this intrepid group of middle schoolers embarked on the Appalachian Trail in late-October with temperatures dipping below freezing each night.



**JUSTIN ENNIS**

For most of the students, it was their first time backpacking and first time sleeping in the woods. Far from their families and the comforts of their daily lives, they looked to each other to provide the courage and motivation needed to complete their dozen-mile trek.

When they made their triumphant return to The Discovery Center after five days on the trail, they were greeted with cheers and hugs from friends and family. At the closing ceremony, the students' chaperone Bryony shared that -- with the exception of childbirth -- this expedition was perhaps the most challenging experience of her life. Then Bryony turned to the families and said *"Your children are stronger than you realize."*

At the heart of the Philadelphia Outward Bound School is the belief that every young person deserves access to spaces and experiences that will challenge, inspire, and empower them. And working alongside dedicated, compassionate educators like Bryony, the greatest impact we hope to make is changing how young people perceive their capabilities. This report is a testament to our amazing community of staff, partners, and supporters who share these beliefs and are committed to helping youth develop the skills, the self-confidence and the peer relationships they need to thrive.

Thank you for joining us on this adventure!

A handwritten signature in cursive that reads "Justin".

Executive Director  
Philadelphia Outward Bound School



*Bryony Grant, center, with students of the Russell Byers Charter School, who have just returned from their Outward Bound expedition with smiles, certificates, and a new sense of their own inner strength and capabilities.*

# 2024

## by the numbers



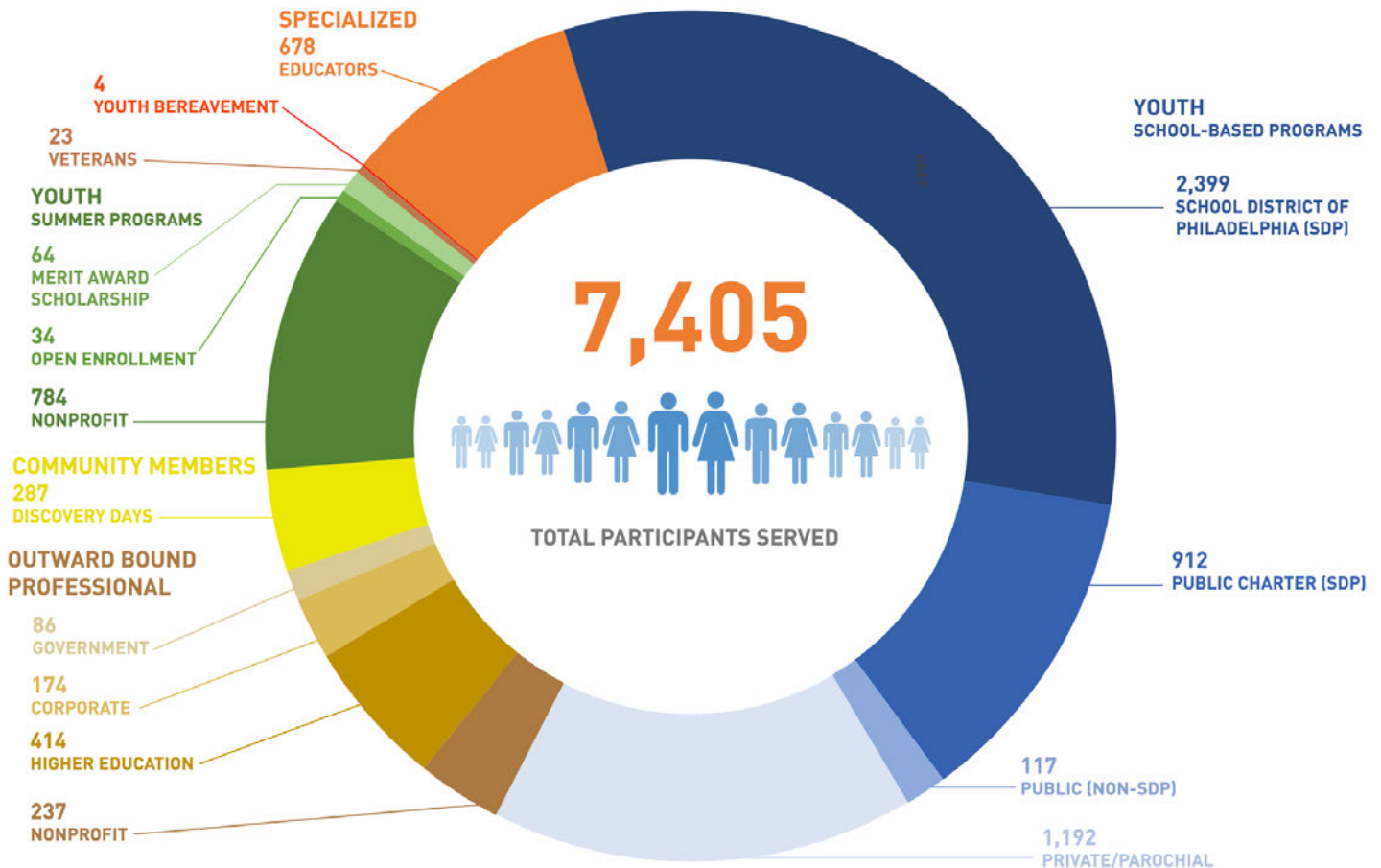
**\$827,217**

*Scholarship & Financial Aid*

**123**



*Program Partners*



# Outward Bound Offers Relief for “the Anxious Generation”

by Matt Norcini

While educators and parents continue to wrestle with the impact of technology and the pandemic on student learning, Jonathan Haidt’s best-selling book, *The Anxious Generation: How the Great Rewiring of Childhood Is Causing an Epidemic of Mental Illness*, has put cell phones and social media in the crosshairs of parents, schools, and state legislatures.

Haidt’s work argues that a transition from a “play-based childhood” to a “phone-based childhood” has contributed to the rise of “The Anxious Generation.” Haidt argues that phones have transformed the way young people build relationships, resilience, and a sense of self.



SCH 9th grade students spend their first week of school on a five-day Outward Bound expedition, no cell phones allowed.

As a result, many schools are discussing new ways to limit access to devices during the school day, such as with cell phone holders by companies like Yondr. As a principal of a high school that implemented the use of these cell phone holders over a year ago, I can attest to the transformative change of getting phones out of the classroom.

The removal of devices is one piece of the puzzle. Another is finding ways to facilitate for our children the creation of deep and meaningful connection, the development of self and belonging, and a sense of value and purpose in the world.

Enter nature. The immersive, inspiring power of the natural world, argues Haidt, is one way to help children break free from phones and seek to be “awed” by its power to transform us. It can be a simple walk in the woods, or time sitting outside, free from devices, to reflect and connect. In our busy lives, we just need to make space for it.

Luckily, for teachers and parents wanting more for their students and children, there is an organization that has been “changing lives through challenge and discovery” in the outdoors since the Second World War: Outward Bound.

In the words of Outward Bound co-founder Kurt Hahn:

*“There is more to us than we know. If we can be made to see it, perhaps for the rest of our lives we will be unwilling to settle for less.”*

At Springside Chestnut Hill (SCH) Academy, we have partnered with the Philadelphia Outward Bound School for more than a decade to build meaningful learning experiences for our students. Each year, our ninth grade class spends its first five days of school in the woods: no showers, no toilets, no cabins, and, importantly, no phones.

Students spend their five-day expeditions in advisory groups that will be a cornerstone of their high school experience. From morning breakfast and the breakdown of camp to day-ending reflection and conversation around the fire, Outward Bound creates familiarity in unfamiliar environments by providing a knowable, repeatable structure to its participants.

This structure facilitates learning that is shared and collaborative and meets students where they are. It helps them engage authentically and directly with one another without the distraction of cell phones.

Each year, feedback gathered from students attests to the power of learning in the outdoors. In years of collected data, the top response to the question “What did you learn about yourself on expedition?” is, by far:

*“I learned that I am capable of so much more than I thought I was.”*



SCH students backpack 6-8 miles per day on their trip.

And while Outward Bound experiences don’t transform all students into outdoors-loving adults, they do demonstrate the power of connection, challenge, and belonging.

For many students, their Outward Bound experience is the first time they have been away from their cell phones, screens, and social media since they were toddlers. But the stories, smiles, and bonds that I see emerge from the woods demonstrates that students want play-based lives, as well. It’s our generational responsibility to help them do it.

*Matt Norcini is the Head of Upper School at Springside Chestnut Hill (SCH) Academy in Philadelphia and the Chair of the Board of Trustees for the Philadelphia Outward Bound School.*

# OUR PARTNERS

## **SDP MIDDLE SCHOOL EXPERIENCE**

Bethune, Mary McLeod Elementary  
Blaine, James G. Elementary  
Clemente, Roberto Middle School  
Dick, William Elementary  
Duckrey, Dr. Tanner G. Elementary  
Gideon, Edward Elementary  
Kelley, W.D. Elementary  
Kenderton Elementary

## **SDP 9TH GRADE ACADEMY**

Building 21 HS  
Dobbins, Murrell HS  
Edison, Thomas A. HS  
Frankford HS  
Furness, Horace HS  
Kensington CAPA HS  
Kensington Health Sciences Academy  
Kensington HS  
King, Martin Luther HS  
Northeast HS  
Olney HS  
Penn Treaty HS  
Randolph, A. Phillip Technical HS  
Roxborough HS  
Sayre, William L. HS  
School of the Future  
South Philadelphia HS  
Strawberry Mansion HS  
Swenson Arts and Technology HS  
The LINC HS  
The U School  
Vaux Big Picture HS  
Washington, George HS

## **OTHER SDP PUBLIC ELEMENTARY AND MIDDLE SCHOOLS**

Overbrook Educational Center

## **SDP/OTHER PUBLIC HIGH SCHOOLS**

Arts Academy at Benjamin Rush HS  
Lankenau Environmental Science HS  
Saul, W.B., Agricultural HS  
West Chester Area School District

## **CHARTER - ELEMENTARY AND MIDDLE SCHOOLS**

Independence Charter School  
Russell Byers Charter School  
Wissahickon Charter School - Awbury  
Wissahickon Charter School - Fernhill

## **CHARTER - HIGH SCHOOLS**

Boys Latin of Philadelphia Charter  
Freire Charter HS  
IMHOTEP Institute Charter HS

Universal Creighton Charter School

## **PRIVATE/INDEPENDENT SCHOOLS**

Cristo Rey Philadelphia HS  
Germantown Friends  
Girard College  
LaSalle Academy  
Natural Creativity School  
Pennsylvania School for the Deaf  
Springside Chestnut Hill Academy  
Middle School  
Springside Chestnut Hill Academy  
High School  
The Crefeld School  
The Rose Tree Media School  
St. Mary Interparochial School  
Tiferet Bet Israel  
Valley Forge Military Academy  
William Penn Charter School

## **COMMUNITY GROUPS (YOUTH SERVING)**

Audubon Mid-Atlantic  
Alliance for Watershed Education  
Bicycle Coalition of Greater Phila.  
Big Brothers Big Sisters Independence  
Currently Trending  
Discovery Pathways  
Ed Snider Youth Hockey Foundation  
Fairmount Water Works  
Families and Communities on the Move (FAMCOM)  
Hand2Paw  
Heights Philadelphia  
Inspiring Minds of Greater Philadelphia  
JEVS Human Services  
Natural Creativity  
Netter Center for Community Partnerships  
One Day at a Time (ODAAT)  
Penn Presbyterian Medical Center, High School Program  
Peter's Place  
Police Athletic League - North Penn  
PowerCorps PHL  
Project HOME  
SquashSmarts  
Summer Search Philadelphia  
Teen Trek  
The Empowerment Achievement Movement (TEAM Inc.)  
The Fellowship Initiative/Brothers@  
**ADULT - UNIVERSITY/COLLEGE GROUPS**  
Arcadia University

Community College of Phila  
Drexel University, Lebow  
College of Business  
Temple University  
Thomas Jefferson University  
University of Pennsylvania - The Wharton School  
Williamson College of the Trades

## **ADULT - EDUCATOR GROUPS**

Henry, C.W.  
Elkin, Lewis  
Lankenau Environmental  
Science Magnet HS  
Overbrook Education Center  
Russell Byers Charter School  
School District of Philadelphia  
Staff Offices:  
• Diversity, Equity and Inclusion  
• Prevention and Intervention  
• Professional Learning  
• Climate and Culture  
• Student Enrollment and Placement  
• Student Health Services  
• Student Life  
• Student Rights and Responsibilities  
• Student Support Services  
Springside Chestnut Hill HS  
Young Scholars Charter School

## **ADULT - COMMUNITY GROUPS**

Xiente

## **ADULT - CORPORATE/GOVERNMENT/FOUNDATION GROUPS**

Accenture  
ALPFA  
Bellevue Strategies  
C.F. Martin & Company  
CFMA  
Croda Inc.  
ImpactED  
Leadership Philadelphia  
Merck  
Parkway Corporation  
Philadelphia Parks and Recreation  
Philadelphia Veterans Affairs Medical Center  
SEI Investments Company  
United States Environmental Protection Agency - Region III  
William Penn Foundation

# The Discovery Center Celebrates Sixth Anniversary with “Discovery Fest”

The event was in addition to community-focused “Discovery Days” held throughout the year

Throughout 2024, the Philadelphia Outward Bound School and Audubon Mid-Atlantic co-hosted several free public events at The Discovery Center. These events — called “Discovery Days” — included rock climbing, ziplining, birding, and canoeing in the reservoir.

The largest event of the year was **Discovery Fest: A celebration of the 6th Anniversary of The Discovery Center**, which attracted 400 attendees on October 5th.

Participants took part in ziplining, canoeing, and challenge course experiences on the James McLane Family Challenge Course. Cheers to Audubon staff who added a unique educational aspect by integrating bird and environmental education into the canoeing portion of the day. They provided binoculars, facilitated a popular “Create Your Own Bird Feeder” craft, led hourly tower tours, and distributed self-led Discovery Center scavenger hunts.

POBS hosted a Backpacking 101 table showcasing program area maps and gear, while other tables introduced participants to POBS programming opportunities.



*Bria Wimberly of Audubon Mid-Atlantic has some customers at the “Create Your Own Bird Feeder” table.*

## Service in the Wild: Outward Bound Students Give Back Through Trail Maintenance While on Expedition



*These POBS students geared up for trail maintenance as part of their expedition in the Delaware Water Gap.*

The Philadelphia Outward Bound School has partnered with the New York-New Jersey Trail Conference to provide service opportunities to students on expedition in the Delaware Water Gap National Recreation Area. In the summer of 2024, students on course met up with Zac Cole, Long-Distance Trails Program Coordinator at the Trail Conference, to perform trail maintenance.

Cole provided instruction, safety gear and implements to cut back overgrowth, and then the students spent the morning working their way along the Coppermine Trail, an offshoot of the Appalachian Trail.

“Being on this course is an amazing opportunity that we’ve been given,” said Yashmee, a 15-year-old POBS student. “Clearing the trail is a great way to give back to other hikers.”

Cole was impressed with what he saw. “I hope this partnership continues,” said Cole. “I think it’s a natural fit – Outward Bound, the Trail Conference and the Appalachian Trail all supporting each other to do good work.”

# Philadelphia Educators Take Learning to New Heights at POBS' Annual Educators Week

At the start of the 2024 school year, more than 500 teachers and support staff from nine schools and the School District of Philadelphia gathered for an unforgettable experience at the Philadelphia Outward Bound School (POBS). The annual Educators Week brings participants together for a unique mix of adventure, teamwork, and personal growth.

Led by expert POBS instructors, educators took part in a variety of activities designed to challenge them both mentally and physically. They navigated the aerial team course, participated in leadership discussions, and engaged in exercises that encouraged self-awareness and resilience. Along the way, they discovered new strengths in themselves and their colleagues while exploring strategies to support social-emotional learning in the classroom.

More than just a team-building event, Educators Week helps set the tone for the year ahead. Teachers reflect on their experiences, drawing connections between the challenges they faced and those their students will encounter. By fostering collaboration, strengthening relationships, and emphasizing personal responsibility, the program equips educators with fresh insights and tools to create dynamic, student-centered learning environments, and provides a renewed sense of purpose and inspiration to support their students as they start a new school year.

*Right: Educators Week 2024 received extensive media coverage, including a large feature in the Philadelphia Inquirer by education reporter Kristen Graham.*

## The Philadelphia Inquirer

Teaching in Philly is tough. Some schools build community on the ropes course.

"I just want them to feel supported and welcomed and loved on," one Philadelphia principal said. "This is hard work."



Frank Bandy, a new teacher at Elkin Elementary, crosses the ropes course at the Philadelphia Outward Bound Discovery Center in Philadelphia. Photo: Philadelphia Outward Bound School

by Kristen A. Graham  
Published Aug. 22, 2024, 1:33 p.m. ET

Helmet strapped onto his head, harness firmly in place, brand-new Philadelphia teacher Frank Bandy made his way carefully across a ropes course, shaking a little, but determined. Behind him, Gabriella Pacheco, also a new educator, moved with similar energy.

## POBS ALUMNI TEAM WINS BIG AT 2024 INDEPENDENCE DRAGON BOAT REGATTA

The POBS Dragons were formed in 2022 to engage both POBS and other Outward Bound alumni who live in the Philadelphia area.

Spurred by POBS co-founder Nancy Goldenberg's passion for dragon boating, the team is also open to POBS staff and board



members, and is coached by Outward Bound alum Dave Kunz, who was a member of Team USA for the dragon boat world championship in China 2017.

No experience is required to join the team, whose membership age range spans some fifty years. Several practices are held on the river each year before the big race day in June when the Independence Dragon Boat Regatta (IDBR) is held.

The POBS Dragons won their first heat in 2022 but did not place in the finals. That changed the next year at the 2023 regatta when the POBS Dragons came in first place in their division to take home the gold!

In 2024, POBS won the silver in their division at the regatta and also took home the prestigious Educators Cup (see photo at left).

For more information and to join the team see [pobs.org/alum](https://pobs.org/alum).

# 2024 Trailblazer Gala



*Honoring Jennifer Raymond and Katie Newsom*

Outward Bound friends and family came to The Discovery Center from near and far for POBS's bi-annual Trailblazer Gala on June 5, 2024.

The event provided an opportunity to celebrate Katie Newsom and Jennifer Raymond, each of whom celebrated their 25th year at Outward Bound.

News reporter (and two-time Outward Bound alum) Sergio Cruel kicked off the festivities, reminiscing about the role that Katie and Jenn had played in his life as a teenager; the crowd also heard from POBS Executive Director Justin Ennis and Outward Bound USA CEO Ginger Naylor.

**Nearly \$100,000**  
*Raised in One Eventful Night!*



Jenn and Katie received the second-ever Founders' Awards, given in recognition of individuals who have showed extraordinary leadership and vision in support of the Philadelphia Outward Bound School. Jenn's award was presented by POBS co-founder Nancy Goldenberg (left); Katie's was presented by POBS co-founder Tim Greenwood (right).





## 2024 OUTCOMES DATA

# MEASUREABLE MOMENTS AND LASTING IMPACT

In 2024, POBS participants didn't just conquer physical challenges; they grew as individuals. Students reported improvements in **courage, teamwork, and self-awareness** — proof that the power of adventure creates lasting impact. Measurable moments include:

We served **7,405 participants** across **123 schools, community organizations, and Philly businesses**.

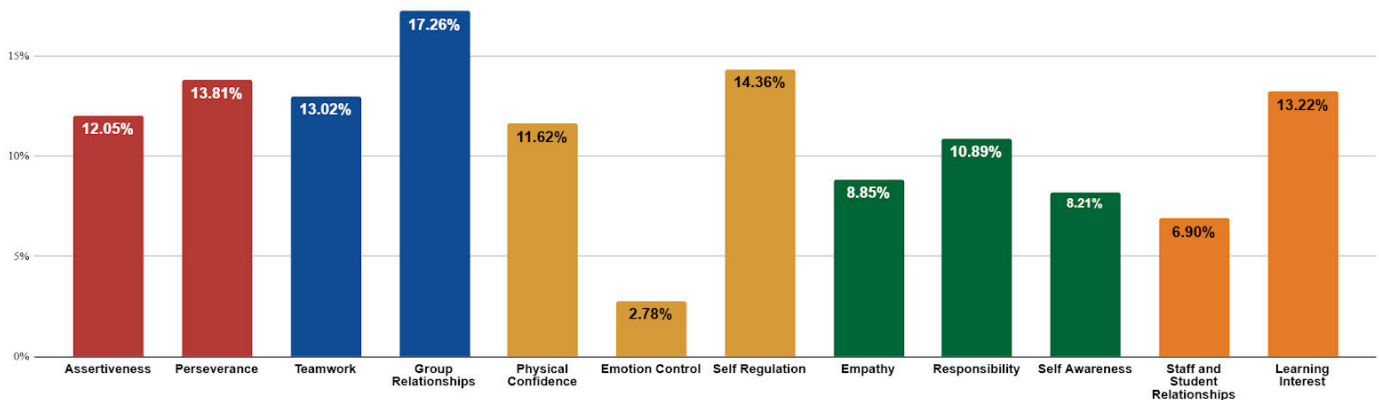
We sent out **61 expedition crews**:

- Students **paddled 696 miles of river** (equivalent to paddling the Delaware River 2.5 times).
- They **hiked 790 miles of the Appalachian Trail** (equivalent to walking from Philadelphia to Florida).

Participants combined:

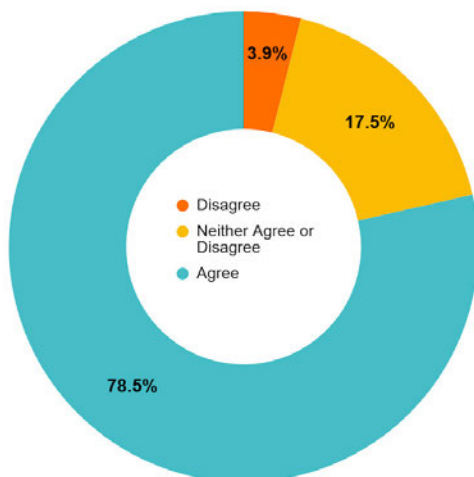
- **Climbed 68,663 vertical feet** (about 3 Mt. Everests).
- **Traversed 62 miles of cable** on our challenge courses (that's a lot!).

### Total Percent Change From Start to Now



But the real impact wasn't just the physical feats — it was in the personal growth. Overall, participants showed the most improvement in **Group Relationships, Self-Regulation, and Perseverance**, particularly in our 5-day+ expedition programs.

In our day programs (averaging 4 hours), growth was strongest in **Group Relationships, Teamwork, and Physical Confidence**. These outcomes are apparent not only in the data, but also in what we hear during the course. As one participant put it, while standing on the central platform of the Aerial Teams Course, **"I'm gonna do it, I'm gaining the confidence."** Another said, **"If you go, I'll go. Let's do it."**



It's the personal takeaways that truly highlight the value of these experiences. After completing an expedition, **79% of students reported feeling they had gained the courage to face new challenges** — proof that the challenges they overcame on the river, trail, or rock wall left a lasting impact on their approach to life.

Chaperones see the change, too. Said one, **"They didn't realize how mentally healthy they would feel, disconnecting from their cellphones for so long.** They have positive things to report to their peers about the excursion, and **most say they would do it again."**

*Left: After completing an expedition, 79% of students reported feeling they had gained the courage to face new challenges.*

# Thank You 2024 Donors!

## Multi-Year Grants

Our work in 2024 was supported by multi-year grants, received in prior years, from the following institutions:

Barrist Family Foundation  
BLBB Charitable  
The Gordon Charter Foundation  
Patricia Kind Family Foundation  
The McLean Contributionship  
David Pincus Family Foundation  
John Templeton Foundation  
William Penn Foundation

## \$50,000+

GlaxoSmithKline  
H. Chase Lenfest  
McCausland Foundation  
The Estate of John B. Neff  
Sixers Youth Foundation

## \$25,000-\$49,999

The 25th Century Foundation  
1830 Family Foundation  
Arbor ST Foundation of the Philadelphia Foundation  
The Berstein Family Foundation  
Chappell Culpeper Family Foundation  
Connelly Foundation  
John and Janet Haas  
The Hamilton Family Charitable Trust  
The Townsend Foundation  
Mystery Ranch LLC  
The Philadelphia Foundation Vanguard  
Michael Van Pelt  
Vert Charitable Trust  
Virginia Cretella Mars Foundation  
Mitchell Young and Anna Forrester

## \$10,000-\$24,999

Jon and Emily Conant  
Nancy Goldenberg  
William King Charitable Foundation  
John Lazarich Foundation  
Connie Lotz

The Martin Guitar Charitable Foundation  
James and Meg McLane  
Donald and Phyllis Mobley  
Queen's Jubilee Education Fund of The Philadelphia Foundation  
Homer Robinson and Lisa Zahren  
SEI Investments  
Stanley Family Fund of the Community Foundation of New Jersey

## \$5,000-\$9,999

Michael and Natalie Barrist  
Jim and Alyse Bodine  
Philip Charron and Lesly Attarian  
Ernst & Young LLP  
Tim Greenwood, Jr. and Sandy Greenwood  
Mark and Michelle Haslam  
Laura Kohler and Steve Proudman  
Doff Meyer and Robin Brecker  
David Norcini  
PNC  
The Society of the Sons of St. George  
Kimberly Togman and Geoff Aguirre

## \$2,500-\$4,999

The Allerton Foundation  
Canon Solutions America  
Joan Cheever  
Paulette Greenwell  
The Haverford Trust Company  
Eric Hirschberg and Lorraine Stanhope Hirschberg  
Peter Kenney and Dorothy Novick  
Betsy Longstreth  
The Merck Foundation  
Allison Martin Nguyen  
Ninja Transfers LLC  
Rachana Patel  
Radius Global Solutions LLC  
Claire Robertson-Kraft and Paul Hughes  
Rush Order Tees  
The Scholler Foundation  
Donald and Hether Smith  
Jonathan Steitzer and Catherine Boysen

Geoffrey and Virginia Worden  
**\$1,000-\$2,499**

Betterworldians Foundation  
Robert Carpenter  
Mary Carroll  
Joseph and Nancy Carruth  
Steven Chintaman  
Craig Coleman  
Keenan Corrigan  
Kenneth Croney  
Friends of Education  
Robert and Susan Harries  
Susan Hollenstein  
Liz and Tim Huston  
Yardly and Scott Jenkins  
Christian R. and Mary F. Lindback Foundation  
Lauren and Mark Kahn  
Laura Kind McKenna  
Susan Leidy  
Leah Lim and Bula Bhullar  
Laurie and Sam Marshall  
Susan McIlvaine  
Peter Meredith  
Ludlow and Babbie Miller  
Gregory E. Miraglia  
Julian Miraglia  
NewCourtland  
Matt Norcini  
Casey and Sunshine O'Donnell  
Brian Price and Patricia Doyle Price  
The Rittenhouse Foundation  
The Rorer Foundation  
Catherine Smith  
Jack and Alicia Stoddard  
Alexandra Storm  
Bryan Tracy  
Nancy Winkler and Jay Bryan  
Leslie Yamada

## \$500-\$999

Andrew J. Adams  
Dana and Roger Band  
James and Virginia Barnhart  
Donna and Otis Bullock  
Jeremy Coote  
Anthony (T.J.) Costa  
David Crawford  
Nyron Crawford  
Omar Crowder

John D'Anna  
Sonia Nofziger Dasgupta and Indranil Dasgupta  
J.B. and Winnie Doherty  
Door and Gate Co, LLC  
Justin Ennis  
Kate FitzGerald  
Elizabeth Gemmill  
Dianne Gilbert  
Wendy and Richard Glazer  
Joseph Gregorio  
Jonathan and Deborah Hirtle  
Dan and Kerry Hoffman  
Terry Jacobs  
Jasper Street Partners  
Leslie Kase  
Lois Kraft  
Cristina Landa  
Reed Larson  
LEADERSHIP Philadelphia  
Deborah Maine  
Joseph Manko, Sr.  
Danielle Merritt-Robinson  
Nancy Peterson  
Nora Reynolds  
Leyla Salehli  
SquashSmarts  
Jean and James Trujillo  
Andrew Wheeler  
Carl Witonsky

## \$250-\$499

Anonymous  
Apple Matching Gift Program  
Bethany Asplundh  
Josh and Lauren Averill  
Cindy Crompton Barone  
Ronald Bressler  
Shanley Ressler Campbell  
David Cawley  
Commonwealth Committee  
Tara Cross  
Peteris Dajevskis  
Susan Donovan  
Susan Gerrity  
Amanda Branson Gill  
Goldman Sachs Matching Gift Fund  
Jeff Harbison and Val Arkoosh  
Suzette and Peter Hearn  
Kevin Hughes  
Bob Jobin and Julie Woodard

## 2024 Donors (cont'd)

Tudy and Hyman Kahn  
Elyssa Kane and Jeffrey Levine  
Sheila Kane  
Jeff Klein  
Christine Ladnier  
Lisa Breakwell le Duc and Colin le Duc  
Arnold (Tim) Massaquoi  
Barbara Mattleman and Dean Kaplan  
Katherine McAnnar  
Mary Kate Meder  
Douglas Miraglia  
Jeff Mitzak  
Erica and Andrew Montemayor  
Nancy Naowith  
Ginger Naylor  
William Newbold  
Katie Newsom  
Sophia Ozenbaugh  
Outward Bound USA  
Susan Peck  
Edward Ruggero  
Paul Schwartz  
Springside Chestnut Hill Academy  
Anne Thatcher  
Leonard and Barbara Togman  
Harry and Agatha Tyler  
Marion Van Pelt  
Kellan White  
Reggie and Nina Wilkes  
Mitchell Zink

*This list represents donors giving \$250 or above. We apologize for any errors or omissions. Please contact us at (215) 932-9130 with questions.*

Philadelphia Outward Bound Center  
dba  
Philadelphia Outward Bound School  
3401 Reservoir Drive  
Philadelphia PA 19121  
Justin Ennis  
Executive Director  
EIN 56-2472884



# NEW PARTNER SPOTLIGHT

## VALLEY FORGE MILITARY ACADEMY

POBS is proud to announce an exciting new partnership with the Valley Forge Military Academy (VFMA), an international leadership institution where young men discover their potential, fortify their character, and develop into leaders.

Our Outward Bound courses deeply align with VFMA's mission of character and leadership development, allowing cadets across all grade levels to actively engage in meaningful, hands-on experiences that reveal their strengths and build confidence.



*VFMA cadets prepare to tackle the POBS high ropes course in Fairmount Park.*

Early results from the partnership have already showcased encouraging growth among cadets, highlighting increased confidence, enhanced teamwork, and deeper personal insights.

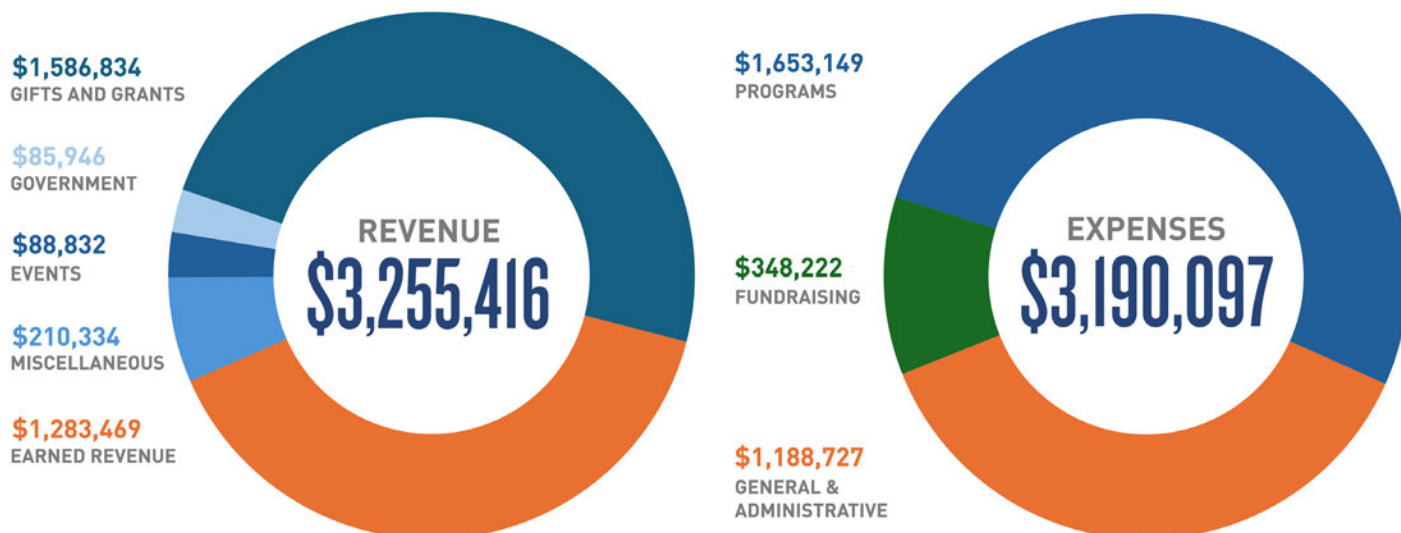
“We believe we have an important role in helping our school partners realize their most ambitious educational goals,” said Justin Ennis, Executive Director of POBS. “Every moment on an Outward Bound course is designed to foster a sense of connection, confidence, and shared purpose among students.”

Katie Newsom, Head of School at VFMA, is enthusiastic: “I strongly believe that this program partnership will be the educational catalyst we need for today’s cadets to become tomorrow’s leaders. The opportunity to discover untapped potential through Outward Bound’s time-tested experiential learning approach is a priceless investment for the Academy.”



*One of three VFMA crews on a five-day expedition with POBS in Fall 2024.*

# 2024 Financial Snapshot



*Audited statements not available at time of printing. Please email [info@pobs.org](mailto:info@pobs.org) for a copy of our 2024 audit.*

## SPRING PARTNER BREAKFAST HIGHLIGHTS COLLABORATION AND IMPACT

In early May, POBS staff, partners, and supporters gathered at our scenic headquarters in The Discovery Center for our Expedition Launch Partner Breakfast.

This special event marked the official start of our program season and highlighted our commitment to fostering strong partnerships and delivering impactful social-emotional learning experiences.

We were honored to welcome esteemed panelists including Dr. Claire Robertson-Kraft, Founder and President of ImpactED; Dr. Crystal Edwards,



Principal of W.D. Kelley School; Kim Glodek, POBS Director of Education and Partnerships; and Emily Della Fera, POBS Associate Director of School District Partnerships. The panel discussed the critical role of data and partner feedback in continuously refining and enhancing our educational programs. Additionally, POBS students shared inspiring personal reflections from their transformative experiences during their courses.

Attendees also enjoyed a tour of The Discovery Center and a behind-the-scenes look at students from Swenson Arts & Tech High School, The LINC, and Kensington Health Sciences Academy preparing to embark on their 5-day backpacking and canoeing expeditions in the Delaware Water Gap.



# SOME OF OUR FAVORITE PHOTOS FROM 2024



# PHILADELPHIA OUTWARD BOUND SCHOOL

3401 Reservoir Drive | Philadelphia, PA | 19121

[pobs.org](http://pobs.org)



@outwardboundPHL

## BOARD OF TRUSTEES\*

Matt Norcini, Chair  
*Springside Chestnut Hill Academy*

Claire Robertson-Kraft, PhD,  
Vice Chair  
*ImpactED*

Allison Martin Nguyen, Vice  
Chair  
*Merck & Co.*

Donald Mobley, Treasurer  
*Arch Capital*

Kate Fitzgerald, Secretary  
*McNulty Leadership Program  
at the Wharton School*

Andrew Adams  
*School District of Philadelphia,  
Northeast High School*

James Bodine, Vice Chair  
*HJ Sims*

Philip J. Charron  
*Documo*

Steven Chintaman  
*Bellevue Strategies*

Keenan Corrigan  
*REI Co-op Path Ahead  
Ventures*

Nyron Crawford, PhD  
*Temple University*

John D'Anna, CFP  
*Hirtle, Callaghan & Co.*

Cory Dulaney  
*Community College of  
Philadelphia*

Crystal Edwards, EdD  
*School District of Philadelphia,  
William D. Kelley School*

Mark Kahn, MD  
*Crozer Chester Medical Center*

Danielle Merritt-Robinson,  
EdD  
*School District of Philadelphia,  
Pennypacker School*

Gregory Miraglia  
*PNC Bank*

Nancy Peterson  
*Allied Universal*

Homer Robinson  
*Parkera*

Kimberly Togman  
*Scalable Leader*

Bryan Tracy  
*The Haverford Trust Co.*

Mike Van Pelt  
*Comcast*

Kellan White  
*Political Advisor*

Mitchell Young  
*Neustar, Inc.*

## TRUSTEES EMERITI

Jon Conant  
N. Peter Hamilton  
Mark Haslam  
James W. McLane  
Meg Callaghan McLane  
Ludlow Miller<sup>+</sup>  
Michael C. Stanley<sup>+</sup>

<sup>+</sup>Deceased

## FOUNDERS

Nancy A. Goldenberg  
T.S. "Tim" Greenwood  
The Hon. Michael A. Nutter

## ADMINISTRATIVE STAFF\*

Sam Barnhart  
*Associate Director Specialty  
Programs*

Aisha Burrell  
*Associate Director  
Admissions and  
Screening*

Henry Carruth  
*Associate Director of Logistics  
and Operations*

Emily Della Fera  
*Associate Director of School  
District Partnerships*

Justin Ennis  
*Executive Director*

John Frisbee  
*Director of Development*

Kim Glodek  
*Director Education and  
Partnerships*

Ramya Gopalakrishnan  
*Staffing Manager*

Jennel Johnson  
*Director of Finance and  
Administration*

Qiad Jones  
*Student Services Manager*

Kendra Jordan  
*Associate Director of Logistics*

*and Operations*

Elyssa Kane  
*Donor Relations Manager*

Kadafi El-Kardah  
*Associate Director Community  
Engagement*

Red Malleck  
*Logistic Coordinator*

Katie Nelson  
*Director Program and Safety*

Jenn Raymond  
*Scholarship and Recruitment  
Manager*

Chris Richter  
*Director Marketing  
Communications*

Lauren Stables  
*Director Program and  
Training*

## FACULTY INSTRUCTORS

Opal Bednarik  
Sarah Carminati  
Sacha Donovan  
Sheetal Shelke

## PROGRAM COORDINATORS

Rob Bonner  
Ritam Chakraborty  
Richard Chieffo  
Olive Fine  
Braham Gairola  
Jeff Ladnier

\* As of 12/31/24